

Kurlta Kauwanga (Mount Terrible) – Cultural Mapping Project

KURLTA KA UWANGGA (MOUNT TERRIBLE)

AAR Heritage Sites

- Determined
- Listed
- + Reported
- Reported
- Restricted

Mount Terrible

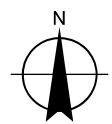
- Locality
- 25km Buffer

Roads

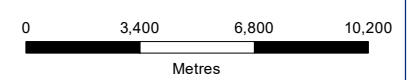
- Highway/Freeway
- Arterial
- Main
- Minor

Water

- Watercourses



1:225,000

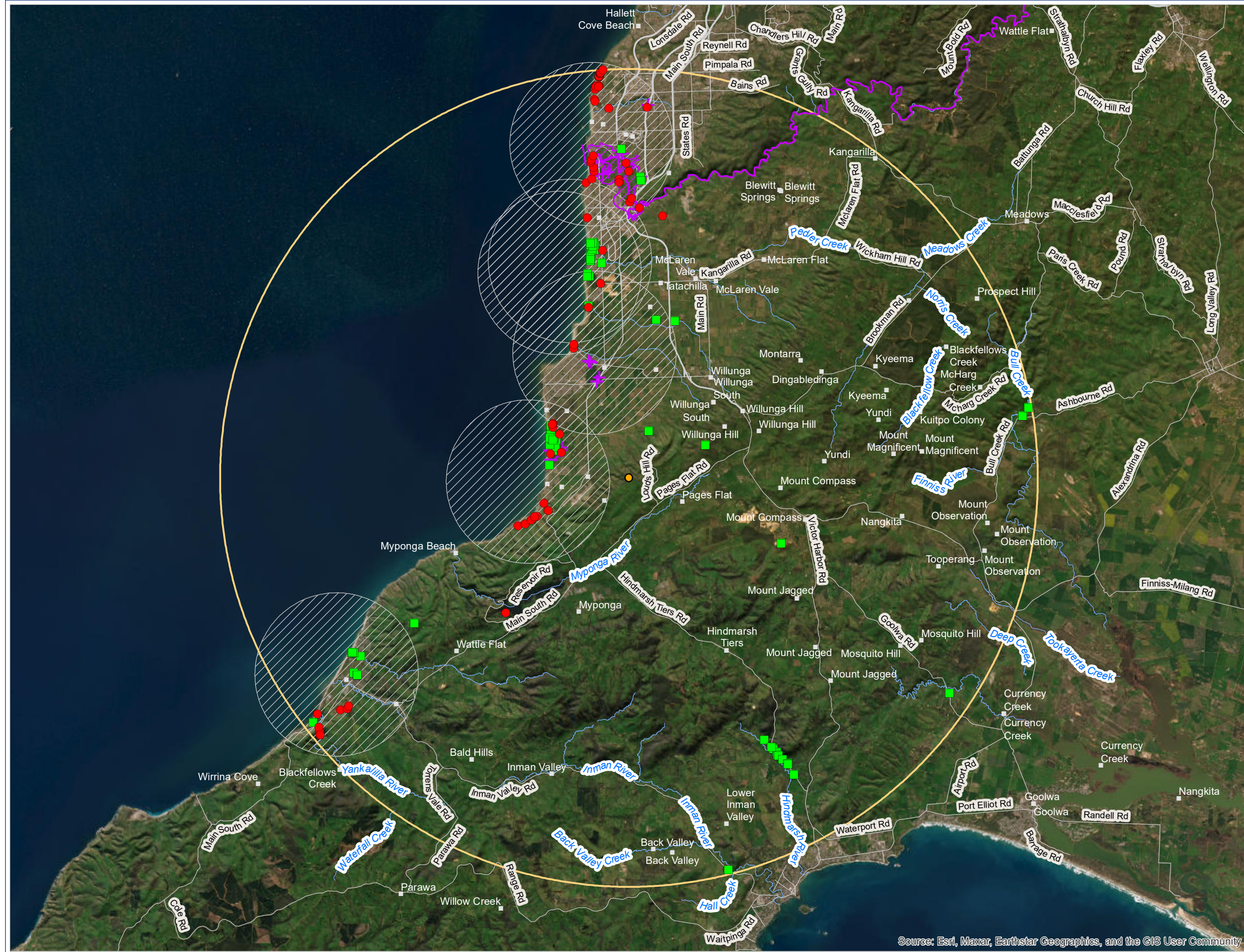


Produced by: Aboriginal Affairs and Reconciliation (AAR)
 Data sources: Aboriginal heritage - AAR
 Topographic / cadastral - Location SA
 Aerial imagery - DEW
 Projection | Datum: Lambert Conformal Conic | GDA2020
 Job No: 2025164
 Compiled: 2/05/2025

Information derived from AAR's central archives is confidential under section 10 of the Aboriginal Heritage Act 1988 (SA).
 AAR's central archives are not a comprehensive record of all Aboriginal heritage and other sources of heritage information may exist. The positional accuracy of this data is variable and dependent on the accuracy of information provided to AAR at the time of recording. The full geographic extent of Aboriginal heritage sites may not be depicted and sites may be larger than they appear on the map.

This map has been produced using information supplied by third parties. Whilst all reasonable care has been taken in the preparation of this information, AAR is not able to warrant its accuracy and accepts no responsibility for the loss, injury or any other liability incurred by any person that arises as a result of the use of this information by any person or organisation.

This map is not to be reproduced or distributed without prior approval from AAR.



Source: Esri, Maxar, Earthstar Geographics, and the GIS User Community